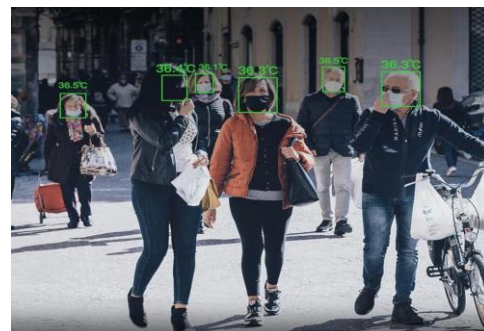


Full Screen Measurement PC Monitoring



**20-30 Faces Detect & Capture
Simultaneously**

Overview

Vi-Link HD IP Thermal Camera:

The TC200 is a Body Temperature Measurement and Face Capture Thermal HD Network Camera for Public Health Control applications.

It is designed to provide full screen body heat measurements, faces recognition with depth learning algorithm to detect and capture up to 30 faces simultaneously.

The camera provides faces tracking, scoring, multi-frame recognition, automatic filter along with the temperature and output the optimal face. The personal in and out information can be recorded in database. The TC200 HD Video resolution supports H.264, H.265 and MJPEG dual coding, three-code stream up to 1920p x 1080p at 30fps. It also supports ONVIF, GB/T28181 and other network protocol.

The TC200 provides a HDMI Video output for connecting to HDTV and an 10/100M Ethernet TX port for connecting to the Network with single IP scheme, network expansion ability, easy access to various video surveillance platforms.

The TC200 Software is an open system, It can provide Linux, Windows SDK development package and CGI protocol, rapid secondary development

Applications include airport health control environments, public transportation such as Metro and inner bus stations, Hospital Emergency room, military bases and government buildings, enterprises and institutions, banks, shopping centers and supermarkets.

Features

- Body Temperature Detection
- Full Screen Temperature Measurement
- Multi-person Up To 3 m Distance
- Selectable Temperature range: -15°C To $+150^{\circ}\text{C}$
- Thermal View Angle Horizontal 35° , Vertical 27°
- Temperature Measurement Accuracy = $\pm 0.3^{\circ}\text{C}$
- HDMI Video Output
- HD Video Resolution up to 1920p x 1080p
- Picture View Angle Horizontal 84° , Vertical 45°
- Support H.265+, H.265/H.264, +MJPEG Dual Coding, Three Code Stream
- 20-30 Faces Detect and Capture simultaneously
- Support Faces capture and save in PC Database
- Network Interface 1 x 10/100M Ethernet TX
- Temperature Alarm

Applications

- Airport Security Health Control
- Public Transportation Metro & Inner Bus Stations
- Government Buildings
- Hospital Emergency Rooms
- Enterprises and Institutions
- Residential Communities
- Shopping Centers and Supermarkets

Order Information

| Model | Descriptions |
|-------|--|
| TC200 | Thermal & Optical Bi-Spectrum HD Network Camera with HDMI Video Output |

Specifications

Infrared Thermal Imagery:

| | |
|------------------------------|---|
| Image Resolution | 256p x 192p |
| Len | 2 mm |
| Sensor | 12 um |
| Temperature Range | -15°C ~ 150°C |
| Temp Measurement | +/- 0.3°C Accuracy |
| Full Screen Temp Measurement | Auto Tracking Max Temp and Min Temp of Screen |
| Temp Selection | Manual Temp Range Selection |
| Picture | White Heat, Black Heat, Fusion, Rainbow, Red, Iron, Amber |

Network:

| | |
|-------------------|---|
| Interface | 10/100M Ethernet (RJ45) |
| Support Protocol | RTSP, RTP, TCP, UDP, UPNP, DHCP, ONVIF, GB/T28181 |
| Temperature Alarm | 1 Ch In/Out (Alarm Linkage) |
| Audio Alarm | 1 Channel In/Out |
| Relay Interface | Normally Open (Output) |

Environment:

| | |
|-----------|--------------------|
| Operating | -20°C to +60°C |
| Storage | -40°C to + 90°C |
| Humidity | 98% Non-Condensing |

Physical:

| | |
|----------|-----------------|
| Dimesion | 10" x 4" x 3.5" |
|----------|-----------------|

HD Video Image:

| | |
|--------------------|--|
| Image Sensor | 1/2.8 2.0M CMOS |
| Image Resolution | 1920p x 1080p |
| Lens | 4 mm |
| Mini Lux | 0.005 Lux @ F1.2 (color), 0.001 Lux @ F1.2 (B/W) |
| WDR | >80 dB |
| S/N | >46 dB (AGC Off) |
| View Angle | 84° (H), 45° (V) |
| HDTV Connection | HDMI Output |
| Pace Snapshot | The built-in deep learning AI algorithm supports the simultaneous detection of 20-30 faces, face detection, exposure, scoring, screening, capture upload, support FTP, HTTP and other ways to upload face, head and shoulder, upper body, whole body, original picture and other pictures. |
| Face Capture | Record in PC Database |
| Temperature Detect | Global and Regional |
| Abnormal Alarm | High, Low Temp Limitation, Area Temp Different Measurement |

Power:

| | |
|------------|---------|
| Standalone | +12 VDC |
|------------|---------|

Application

